



SECTION 9

Plumbing & Electrical Installation Packages



PRODUCT LINE	PAGE
Couplings-Turned, Tool.....	09.007
Clip & Van Hangers.....	09.022
Closet Flanges & Gaskets.....	09.016
Drop Pipe Couplings.....	09.006
Equipment Pads.....	09.033
Geothermal Installation Accessories.....	09.031
Hand Tools.....	09.010A-C
Installation Accessories – Electrical	09.001,09.002A-C
Perforated Hanger.....	09.021
Pipe & Hose Cutters & Cable Saws.....	09.008
Pipe & Hose Cutters-Ratchet	09.009A-B
Pipe Straps & Clamps.....	09.023
Pipe Hangers.....	09.026A-B
Pipe Straps.....	09.024
Plumbing Installation Kits & Cords.....	09.013
Plumbing Specialty Accessories.....	09.018
Plastic Pipe Hangers & Accessories.....	09.028
Pump Tanks –Sourceline.....	09.032A-B
PVC & ABS Saws and Hacksaws.....	09.011
Roof Flashings.....	09.019
Solder Preparation Accessories.....	09.020
Split Ring Pipe Hangers.....	09.027
Strap & Tube Hangers.....	09.029
Stud Protectors.....	09.030
Tapes-3M Vinyl, Rubber.....	09.003
Tapes-Electrical, Vinyl.....	09.004
Tapes-Duct.....	09.005
Tanks - Thermal Expansion.....	09.012
Test Plugs, Caps.....	09.017
Trap Wrap.....	09.014A-B
Tube & Pipe Hooks.....	09.025
Washer Boxes & Drains.....	09.015



Installation Accessories - Electrical



SK Series

Compression Splicing Kit Features:

- Molded from high impact resistant polycarbonate.
- No water absorption characteristics.
- Excellent dielectric properties.
- Available in two, three and four wire kits.
- Supplied with EC1410 wire connectors for #14-#10 gauge wire.
- **Third party certified to NSF/ANSI 372.**



LA1

LA1 Surge Arrestor Features:

- Protects motors and controls from voltage surge caused by lightning interference, switching loads and powerline interferences.
- 500 volt surge protection.
- Easy installation in pressure switch, motor control box or breaker box.
- Instructions included.



LA302R



LA303

LA300 Series Lightning Arrestor Features:

- LA302 Rated 125-250V, single phase, 3 wire Light Duty service.
- LA303 Rated 250V, three phase, 3 or 4 wire service.
- Maximum Current: 60,000 amps on LA302 and 100,000 amps on LA303.
- Maximum Energy per pole: 2000 joules on LA302 and 3000 joules on LA303.
- Unlimited number of surges.
- N-4 Weatherproof enclosure.
- Use with 1/2" or 3/4" locknut for knock-out installation.
- ETL Listed



HPL

Pump Light Features:

- Can be used with two or three wire motors in either 115 volt or 230 volt applications.
- It is easy to install at the pressure switch, where it is used to indicate that the pump is running or at the control box, where it is used to indicate that current is available to the submersible pump.

Part Number	Description	# Tubes	# Connectors	Ctn Qty	List Price
Compression Splice Kits					
SK2	#14, #12, #10	2	2	50	\$ 4.90
SK3	#14, #12, #10	3	3	50	7.23
SK4	#14, #12, #10	4	4	50	9.41
Lightning Arrestors					
LA1	120/240v. AC			112	25.12
LA302R	125/250 V, Single phase, 3 wire, 2 1/4" x 2 1/4"			18	103.30
LA303	250 V, Three Phase, 3 or 4 wire, 2 1/4" x 4 1/2"			18	142.38
Pump Light					
HPL75	Pump Light			12	19.80

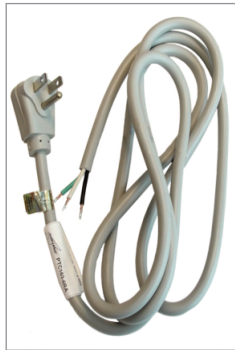




Installation Accessories - Electrical



PTC163-6ST



PTC163-6RA

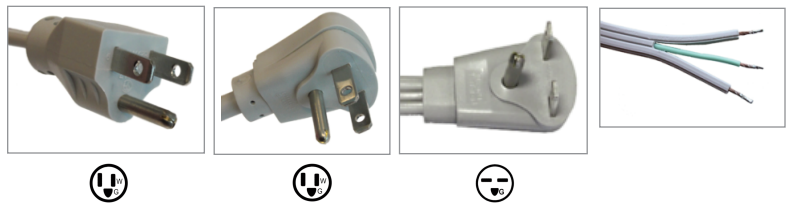
HARVARD CONTRACTOR'S

Power Cord Features:

- Three prong straight (115V) or right angle (115V, 220V) molded plugs.
- 16 gauge, 3 conductor, 13 amp, 125 Volt rating.
- 14 gauge, 3 conductor, 15 amp, 250 Volt rating.
- Six foot cord length.
- Free end is split, stripped 3/8".
- UL and CSA listed in US and Canada.



PTC143-6RA220



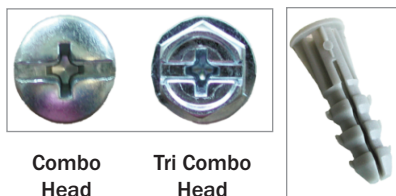
Part Number	Description	Wire Gauge	Volt Rating	Ctn Qty
PTC163-6ST	Straight plug cord	16	125 V	50
PTC163-6RA	Right angle plug cord	16	125 V	50
PTC143-6RA220	Right angle plug cord	14	250 V	50



HARVARD CONTRACTOR'S

Anchor Kit Features:

- Anchor kits complete with 100 plastic anchors, 100 screws and 1/4" masonry drill bit in a plastic case.
- Plastic gray ribbed anchors with lip design for electronic timer, pump start relay installations. Use with concrete block, brick and wallboard.
- Anchors have internal ribs for better centering of screws, locking lugs against pull and twist. Exterior design prevents fall out in overhead holes.
- Kit available with combination slotted/phillips head or tri-combination, slotted/phillips/hex head #10 x 1" screws.
- Kits complete with 1/4" x 4" masonry drill bit.
- Clear, unbreakable plastic case with molded-in hanging tab.



Combo Head

Tri Combo Head

Part Number	Description	Ctn Qty
AK10CSPR	Ribbed Combo Head	36
AK10TCR	Ribbed Tri Combo Head	36





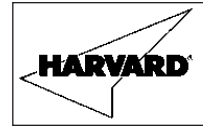
Installation Accessories - Electrical



WCS1022

HARVARD CONTRACTOR'S Wire Cutter/Strippers Features:

- Combination wire cutter and stripper.
- Strips wire sizes 22-10 AWG.
- Heavy duty scissor opening spring.
- Cushioned plastic grips.
- Easy locking thumb lock.



Part Number	Description	Ctn Qty
WCS1022	Wire Cutter/Stripper	100



Installation Accessories - Electrical



HS Series



EC Series

Heat Shrink Splicing Kit Features:

- Excellent dielectric strength and can be shrunk over a large diameter connector and still effectively seals watertight down to a small diameter cable.
- Available in two, three and four wire kits. Designed to fit the new, smaller O.D. pump leads.
- No grease tape or epoxy is needed.
- Highly resistant to moisture, fungus and weathering.
- Supplied w/ EC1410 wire connectors for #14-#10 gauge wire. (EC6/8 for LHS Series.)
- Private labeling available for minimum orders of 200 kits.
- Bulk tubing available.
- **Third party certified to NSF/ANSI 372.**



Wire Connector Features:

- Provides quick, safe and sure electrical connection.
- Seamless.
- 13/16" in length.



Part Number	Tubes Fits Wire Size	# Tubes	# Butt Connectors (included in kit)	Ctn Qty
Black Heavy Wall Heat Shrink Kits				
HS2	#14, #12, #10	2	2	50
HS2-3	#14, #12, #10	2	3	50
HS3	#14, #12, #10	3	3	50
HS3-4	#14, #12, #10	3	4	50
HS4	#14, #12, #10	4	4	50
LHS3	#8, #6, #4, #2	3	3 (#8) 3 (#6)	20
LHS4	#8, #6, #4, #2	4	4 (#8) 4 (#6)	20
CHST	#14, #12, #10	BULK	0	500
Black Standard Wall Heat Shrink Kits				
HSSW2	#14, #12, #10	2	2	50
HSSW2-3	#14, #12, #10	2	3	50
HSSW3	#14, #12, #10	3	3	50
HSSW3-4	#14, #12, #10	3	4	50
HSSW4	#14, #12, #10	4	4	50
CHSSWT	#14, #12, #10	BULK	0	500
Clear Heavy Wall Heat Shrink Kits				
HSHWC2	#14, #12, #10	2	2	50
HSHWC2-3	#14, #12, #10	2	3	50
HSHWC3	#14, #12, #10	3	3	50
HSHWC3-4	#14, #12, #10	3	4	50
HSHWC4	#14, #12, #10	4	4	50
LHSHWC3	#8, #6, #4, #2	3	3 (#8) 3 (#6)	20
LHSHWC4	#8, #6, #4, #2	4	4 (#8) 4 (#6)	20
CHSHWCT	#14, #12, #10	BULK	0	500
Clear Standard Wall Heat Shrink Kits				
HSCL2	#14, #12, #10	2	2	50
HSCL2-3	#14, #12, #10	2	3	50
HSCL3	#14, #12, #10	3	3	50
HSCL3-4	#14, #12, #10	3	4	50
HSCL4	#14, #12, #10	4	4	50
CHSCLT	#14, #12, #10	BULK	0	500
Wire Connectors				
EC1410	For #14-10 gauge wire			100
EC8	For #8 gauge wire			250
EC6	For #6 gauge wire			250
EC4	For #4 gauge wire			100
EC2	For #2 gauge wire			100





Tapes - 3M Vinyl, Rubber



3M® 1700 Temflex™ Vinyl Electrical Tape Features:

- Economical, flexible, general purpose electrical tape.
- Use for protective jacketing and harnessing.
- 7 mil thickness.
- Temperature rating to 176 °F, 80 °C.
- Meets ASTM D-2301 Type 1.
- Imported

1700



LISTED 539H
Insulating Tape

LR48769

Third Party Certified to NSF / ANSI 372

Part Number	Thickness	WidthxLength	Color	Ctn Qty
1700	7 mil	3/4" x 60 feet	Black	100



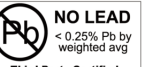
3M® Scotch® Professional Use Premium Vinyl Plastic Tape Features:

- Highly conformable, super stretchy in **all weather** applications.
- Resists UV rays, abrasion, corrosion, alkalis and acids.
- Flame Retardent.
- 7 mil tape thickness Super 33+. 8.5 mil thickness Super 88
- Temperature range 0 °F to 220 °F.
- Use as a primary insulation for wire cable splices up to 600V.
- Use as protective jacketing.
- Made in USA. Made for AGI in a ISO 900X facility.

Super 33+ ASTM D-3005 Type I UL273 & CSA LR48769
Super 88 MIL-I-24391C ASTM D-3005 Type I UL 539H & CSA LR48769

TS Series

ISO 900 X



• Scotch® is a 3M registered trademark

Part Number	Thickness	WidthxLength	Color	Ctn Qty
TS33-20	7 mil	3/4" x 20 feet	Black	10/100
TS33-44	7 mil	3/4" x 44 feet	Black	10/100
TS33-66	7 mil	3/4" x 66 feet	Black	10/100
TS88-66	8.5 mil	3/4" x 66 feet	Black	10/100



3M® 2242 Linerless Electrical Rubber Tape Features:

- Multi-purpose rubber insulating tape.
- Designed for use in splicing and terminating wires and cables.
- Rated up to 194 °F (90 °C) continuous.
- Highly conformable, linerless EPR (Ethylene Propylene Rubber) based tape.
- No Liner for easier handling.
- Excellent thermal dissipation for longer cable life.
- Excellent moisture seal.
- With Flame retardant.
- Meets HH-I-553C and ASTM D-4388 Type I, II, III.

2242

ISO 900 X



Part Number	Thickness	WidthxLength	Ctn Qty
2242	30 mil	3/4" x 15 feet	24



www.cbsupplies.ca
 Phone: (866) 503-5523 Fax: (888) 562-2095
 AGI@cbsupplies.ca





Tapes - Electrical, Vinyl



T60NL



General Purpose NO LEAD Vinyl Electrical Tape Features:

- Third party certified to NSF/ANSI 372.
- Economical, flexible, general purpose electrical tape.
- Use for insulation, protective jacketing and harnessing.
- 7 mil thickness.
- Temperature Range 32°F and 176°F.
- Meets mil spec. MIL-I-7798A.
- Imported



Part Number	Thickness	WidthxLength	Color	Ctn Qty
T60NL	7 mil	3/4" x 60 feet	Black	64



AWT60NL Series



Premium All Weather NO LEAD Vinyl Electrical and Pipe Wrap Tape Features:

- Third party certified to NSF/ANSI 372.
- For use in all weather applications.
- Use for insulation, protective jacketing and harnessing and pipe wrap.
- 7 mil thickness, 3/4" or 2" width.
- Temperature range 14 °F and 176 °F.
- Meets Mil. Spec. MIL-1-7798A.
- Tested to ASTM D-1000
- Imported



Part Number	Thickness	WidthxLength	Color	Ctn Qty
AWT60NL	7 mil	3/4" x 60 feet	Black	64
AWT60-2NL	7 mil	2" x 60 feet	Black	48





Tapes - Duct



Contractor/Industrial Grade Cloth Reinforced Duct Tape Features:

- Multi-purpose duct tapes.
- Polyethylene coated cloth backing.
- Natural rubber based adhesive.
- Temperature range: 40°F to 200 °F.
- Superior tensile strength, adhesion and tack.
- For seaming, sealing and hanging polyethylene or vinyl.
- HDT Series recommended for pool liner installations.
- Conformable and will not curl or twist during application.
- Manufactured for AGI in an ISO9001 facility.

AGDUCT / HDT / EDT Series

Meets UL723

ISO 9001

Part Number	Thickness	Width x Length	Color	Ctn Qty
EDT260	7.5 mil	48mm x 55m (2" x 60 yds)	Silver	24
AGDUCT	9 mil	48mm x 55m (2" x 60 yds)	Silver	24
HDT260	10 mil	48mm x 55m (2" x 60 yds)	Silver	24
HDT260 BLUE	10 mil	48mm x 55m (2" x 60 yds)	Blue	24
HDT260 RED	10 mil	48mm x 55m (2" x 60 yds)	Red	24
HDT260 BLACK	10 mil	48mm x 55m (2" x 60 yds)	Black	24
HDT260 WHITE	10 mil	48mm x 55m (2" x 60 yds)	White	24

Part Number	Adhesive	Total Thickness (mil)	Tensile Strength (lb/in)	Adhesion to Steel (oz/in)	Flame Spread	Smoked Developed Index
EDT260	Rubber	7.5	19.0	28	--	--
AGDUCT	Rubber	9.0	29.0	45	--	--
HDT260	Rubber	10.0	24.0	60	10	5



www.cbsupplies.ca
 Phone: (866) 503-5523 Fax: (888) 562-2095
 AGI@cbsupplies.ca





Drop Pipe Couplings

Couplings for connecting pipe in submersible pump applications.
Ideal for all other threaded applications.



DPC Series



SSDPC Series

DPC Series Features:

- Available in Schedule 80 or 120
- Machined from custom extruded PVC stock which eliminates weak points that occur in molded couplings.
- Reamed and drifted for easy starting of threads.
- Tapered pipe threads for positive watertight connections.
- Made in U.S.A.



SSDPC Series Features:

- Heavy duty, extra heavy wall cast 304 STAINLESS STEEL construction.
- Up to 60% heavier wall than other SS drop pipe couplings available.
- Reamed and drifted for easy starting of threads.
- Tapered pipe threads for positive watertight connections.
- Wrench flats for easy installation.
- Third party certified to NSF/ANSI 372.



Part Number	Pipe Size	Overall Length	Ctn Qty
PVC Schedule 80 - Standard Wall			
80DPC100	1"	2 3/4"	25
80DPC125	1 1/4"	2 3/4"	25
PVC Schedule 120 - Extra Heavy Wall			
DPC100	1"	2-3/4"	100
DPC125	1-1/4"	2-3/4"	100
DPC150	1-1/2"	3-3/8"	100
DPC200	2"	3-3/8"	100
Cast Stainless Steel 304 - Heavy Duty - Extra Heavy Wall			
SSDPC100	1"	2 1/2"	10 / 60
SSDPC125	1 1/4"	2 1/2"	8 / 48
SSDPC150	1 1/2"	2 1/2"	10 / 60
SSDPC200	2"	2 1/2"	6 / 36



Couplings - Turned, Tool



Turned Coupling Features:

- Used for suspending flush well points or strainers from drive shoes or tubular cylinders.
- Galvanized with standard pipe thread.
- Furnished with right hand pipe threads.
- Thin wall 434J.
- Third party certified to NSF/ANSI 372.

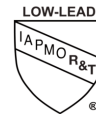


Part Number	Rt. Hand Thread Pipe Size	Well Size	Strainer Size	Coupling O.D.	Coupling Length	Ctn Qty
434J11/4X11/4	1 1/4 x 1 1/4"	2	1"	1 13/16"	2 1/4"	48
434-11/4X11/4	1 1/4 X 1 1/4"	2	1 1/4	1 15/16"	2 1/4	48



Tool Coupling Features:

- Heavy, extra-long black steel coupling recessed for use with well tools and drill rods.
- Third party certified to NSF/ANSI 372.



Part Number	Pipe Size	Thread	OD	Length	Ctn Qty
8049C	1"	1" Tapered	1 5/8"	3 1/2"	24
8049D	1 1/4"	1 1/4" Straight	2 1/8"	3 3/4"	40



Pipe & Hose Cutters & Cable Saws



APC100SS

HARVARD CONTRACTOR'S Plastic Pipe & Hose Cutter with Spring Action Features:

- Heavy duty, cast metal handles.
- Handles designed with matted surface and finger indentation for firm gripping in any weather conditions.
- Spring action for easy use.
- Latch handle for carrying in closed position.
- **Reversible**, replaceable polished high carbon stainless steel blades honed to maintain thin edge longer than competitive blades.
- Cuts PE, Rubber hose & PVC (Class & Sch 40) through 1" ID (max diameter 1 3/8")
- Blister packed with an attractive hang-up card.



The unique cutting action of the Harvard Contractor's cutter is produced by slightly rotating or rocking the cutter on the pipe while squeezing lightly on the handles. After just a few cuts, anyone can make fast, clean, straight cuts. The rotating action is not necessary for rubber hose or soft tubing.



Part Number	Color	Blade Material	Cuts	Ctn Qty
HARVARD CONTRACTOR Pipe & Hose Cutters				
APC100SS	Red	Stainless Steel	PE, Rubber hose & PVC (Class & Sch 40) through 1" ID (max diameter 1 3/8")	50
HARVARD CONTRACTOR Replacement, Reversible Blade				
APC100SSB		Stainless Steel reversible blade		1



CS24L

HARVARD CONTRACTOR'S PVC Cable Saw Features:

- Multi-purpose cable saw cuts PVC pipe.
- Available in two lengths and two handle styles



CS36T

Part Number	Description	Ctn Qty
Cable Saws		
CS24L	Cable saw, 24" length, Loop handle	50/500
CS36L	Cable saw, 36" length, Loop handle	5/200
CS36T	Cable saw, 36" length, T handle	50





Pipe & Hose Cutters - Ratchet



HRPC42



HRPC50



HS25



HM42



HL48



HL50

HARVARD CONTRACTOR'S PVC Ratchet Pipe Cutter

Features:

- For use up to 1 1/4" or 2" diameter pipe.
- All stainless steel cutting blade and ratchet teeth.
- All metal body construction with latching handle for safe storage.
- 1 1/4" cutter has quick release thumb lever for easy blade opening.
- 1 1/4" cutter packaged in blister card for easy display.
- 2" two hand cutter has rubber handle grips.
- 2" two hand cutter packaged with wrap around card for easy display.
- Replacement stainless steel blades and spring sets are available.

Part Number	Description	Ctn Qty
Cutters - with stainless steel blade		
HRPC42	PVC Pipe Cutter, 1 1/4"	50
HRPC50	PVC Pipe Cutter, 2"	10
Replacement Blades - stainless steel		
HRPC42B	Blade for HRPC42	1
HRPC50B	Blade for HRPC50	1
Replacement Spring Sets		
HRPC42SP	Spring Set for HRPC42	1
HRPC50SP	Spring Set for HRPC50	1

PVC Ratchet Pipe Cutter Features:

- For use on plastic pipes up to 1", 1 1/4", 1 3/8", 1 1/2" or 2" diameter.
- **Blade and ratchet teeth made of molybdenum vanadium stainless steel. Stays sharp longer than plated steel blades.**
- All metal construction insures long life; locking clip provides safe storage.
- Holds pipe as it cuts, creating smooth, even ends.
- One hand operation (except on HL50).

Part Number	Description	Ctn Qty
Cutters - With molybdenum vanadium stainless steel blades		
HS25	PVC Pipe Cutter, 1"	60
HM42	PVC Pipe Cutter, 1-1/4"	60
HL42A	PVC Pipe Cutter, 1 3/8"	60
HL48	PVC Pipe Cutter, 1 1/2"	40
HL50	PVC Pipe Cutter, 2"	20
Replacement Blades - Molybdenum vanadium stainless steel		
HS25B	Blade for HS25	1
HM42B	Blade for HM42	1
HL42AB	Blade for HL42A	1
HL48B	Blade for HL48	1
HL50B	Blade for HL50	1
Replacement Spring Sets		
HS25SP	Spring Set for HS25	1
HM42SP	Spring Set for HM42	1
HL42ASP	Spring Set for HL42A	1
HL48SP	Spring Set for HL48	1
HL50SP	Spring Set for HL50	1





Pipe & Hose Cutters



T Series

HARVARD CONTRACTOR'S Plastic Pipe & Hose Cutter

Features:

- Heavy duty, glass reinforced nylon handles.
- Handles designed with matted surface and finger indentation for firm gripping in any weather conditions.
- Handle "bridge" support structure designed to eliminate deflection, bending or breaking while cutting for straighter, truer cut every time.
- "100" and "135" available in black or yellow. "200" available in black.
- Available with either PTFE coated hardened tool steel or polished high-carbon stainless steel blades specially honed to maintain their edge longer than competitive blades.
- Cutter blades individually laser etched with "100", "135" or "200" for easy identification. Replacement blades are blister packed with knock out pin.
- All Harvard Plastic Pipe and Hose cutters are blister packed with an attractive hang-up card.



The unique cutting action of the Harvard Contractor's cutter is produced by slightly rotating or rocking the cutter on the pipe while squeezing lightly on the handles. After just a few cuts, anyone can make fast, clean, straight cuts. The rotating action is not necessary for rubber hose or soft tubing (except when cutting 2" or larger hose with the SS200).



Part Number	Color	Blade Material	Cuts	Ctn Qty
HARVARD CONTRACTOR Pipe & Hose Cutters				
T100	Black	PTFE Coated Hardened Steel	PE, Rubber hose & PVC (Class & Sch 40) through 1"	50
YT100	Yellow	PTFE Coated Hardened Steel	PE, Rubber hose & PVC (Class & Sch 40) through 1"	50
T100SS	Black	Stainless Steel	PE, Rubber hose & PVC (Class & Sch 40) through 1"	50
YT100SS	Yellow	Stainless Steel	PE, Rubber hose & PVC (Class & Sch 40) through 1"	50
T135	Black	PTFE Coated Hardened Steel	PE, Rubber hose through 1 1/2" Class PVC through 1 1/4"	50
YT135	Yellow	PTFE Coated Hardened Steel	PE, Rubber hose through 1 1/2" Class PVC through 1 1/4"	50
T135SS	Black	Stainless Steel	PE, Rubber hose through 1 1/2" Class PVC through 1 1/4"	50
YT135SS	Yellow	Stainless Steel	PE, Rubber hose through 1 1/2" Class PVC through 1 1/4"	50
SS200	Black	Stainless Steel	Rubber hose through 2" PE through 1 1/2" & Class PVC through 1 1/4"	50
HARVARD CONTRACTOR Replacement Blades (includes one knock out pin) DP is DOUBLE PACK				
BT100	PTFE Coated Hardened Steel Blade	T100, YT100	100	
BT100SS	Stainless Steel Blade	T100SS, YT100SS	100	
BT135	PTFE Coated Hardened Steel Blade	T135, YT135	100	
BT135DP	PTFE Coated Hardened Steel Blades (2)	T135, YT135	100	
BT135SS	Stainless Steel Blade	T135SS, YT135SS	100	
BT135DPSS	Stainless Steel Blades (2)	T135SS, YT135SS	100	
SSB200	Stainless Steel Blade	SS200	50	



www.cbsupplies.ca
 Phone: (866) 503-5523 Fax: (888) 562-2095
 AGI@cbsupplies.ca



Hand Tools

PLIERS - WRENCHES - SCREWDRIVERS - NUT DRIVERS



T25343



T25381



T25312



T7910



T25432



T50232



07292



T23106



T23100

Part Number	Description	Ctn Qty	List Price
PLIERS - STANDARD TYPE			
T25343	10" Groove joint plier	5	\$ 23.75
T25344	12" Groove joint plier	5	28.21
T25347B	16" Groove joint plier - bulk packed	5	101.13
T25361	6" Diagonal Cutter	5	12.98
T25381	6 1/2" Long nose plier	5	13.21
PLIERS - SPECIALTY			
T25311	11" Long nose - straight	5	34.64
T25312	11" Long nose - offset neck	5	34.64
WRENCHES - ADJUSTABLE - BULK			
T7906	6" Adjustable wrench	6	12.08
T7910	10" Adjustable wrench	6	20.77
T7912	12" Adjustable wrench	6	30.12
T7915	15" Adjustable wrench	4	71.55
WRENCHES - PIPE			
T25432	10" Pipe wrench	6	23.21
T25436	14" Pipe wrench	6	31.55
T25438	18" Pipe wrench	2	42.02
T25446	24" Pipe wrench	1	70.18
T25460	10" Aluminum pipe wrench	6	45.89
T25462	12" Aluminum pipe wrench	6	53.33
T25464	14" Aluminum pipe wrench	6	57.56
T25468	18" Aluminum pipe wrench	2	87.32
T25474	24" Aluminum pipe wrench	2	138.27
T25486	36" Aluminum pipe wrench	1	272.50
SCREWDRIVERS - BULK			
T50232	#2 Phillips x 4"	5	9.11
T50233	#3 Phillips x 6"	5	11.67
4 in 1 SCREWDRIVERS			
07293	4 in 1 Driver - Soft Touch Handle Includes Phillips #1, #2, Sq Rec #2 & slotted 6-8	1	17.26
07292	4 in 1 Driver - Soft Touch Handle, DISPLAY BOX of 12	12	207.14
NUT DRIVERS - CARBON STEEL - SAE			
T23106	1/4" Nut driver	1	10.00
T23107	5/16" Nut driver	1	10.83
T23109	3/8" Nut driver	1	10.83



PRY BARS - HACKSAWS - HAND SAWS - SNIPS - BOLT CUTTERS - UTILITY KNIVES



T71158



T47015



T22467



T7078

T88148



T22370



T22368



T25426



T00970

Part Number	Description	Ctn Qty
RUBBER MALLETS		
T71154	16 oz. Black head rubber mallet	10
T71158	32 oz. Black head rubber mallet	10
PRY BARS - FLAT		
T47015	14" (355 mm) Spring steel flat pry bar	25
HACKSAWS		
T22466	Contractor hacksaw	6
T22467	Home Owner Pro hacksaw	12
T7078	Handi cut mini hacksaw	5
HACKSAW BLADES - BI-METAL - BULK		
T22552B	10" x 24T Bi-metal hacksaw blade	10
T22555B	12" x 24T Bi-metal hacksaw blade	10
HANDSAWS - BARRUCUDA		
T88148	9 1/2" (240 mm) Barrucuda PVC saw	6
T88149	9 1/2" Replacement blade for Barrucuda PVC saw	5
T88152	12" Barrucuda PVC saw	1
SNIPS - AVIATION		
T22370	Aviation snips - straight cut, yellow handle	6
T22371	Aviation snips - right hand cut, green handle	6
T22372	Aviation snips - left hand cut, red handle	6
SNIPS - OFFSET AVIATION		
T22368	Offset aviation snips - right hand cut	6
BOLT CUTTERS		
T25426	24" Bolt cutter	1
T25428	30" Bolt cutter	1
UTILITY KNIVES and BLADES, GLASS SCRAPERS		
T00971	Lg plastic utility knife, soft touch hdl & autolock-Yellow	1
T00970	Large plastic utility knife w/ soft touch handle & autolock	36
	DISPLAY BOX of 36 - 9 each yellow, red, green, purple	
T00988	Utility knife replacement blades for T00980's - 50 pk	6





MEASURING - GENERAL USE



T77129

Part Number	Description	Ctn Qty
TAPE MEASURES		
01160	1" X 25' Orange Tape Measure - Rubber Jacket	12
01176	1" x 25' Orange Tape Measure - Rubber Jacket DISPLAY BOX of 12	12
TS730	100' (30m) Fiberglass Open Reel Long Tape	6
TS731	200' (60m) Fiberglass Open Reel Long Tape	6
TS732	300' (92m) Fiberglass Open Reel Long Tape	6
WIRE BRUSHES		
T22640	Long Hdl 3 x 19 Carbon Wire Fill Scratch Brush	24
FLAGGING TAPE		
T59301	3" x 300' DANGER Flagging Tape	27
T59302	3" x 300' CAUTION Flagging Tape	27



PVC & ABS Saws and Hacksaws



TBS300

14" PVC/ABS Tool Box Saw Features:

- 14" saw for use with PVC or ABS.
- One saw for all applications.
- Cuts wood, aluminum and drain pipe.
- Durable ABS handle.
- Tempered steel blade.
- 15 teeth, 16 points.
- Cuts in both directions.



PVCSW

PVC/ABS Saw Features:

- 12" or 18" saw blade lengths.
- Aluminum die cast handle for sure grip.
- Cuts large diameter PVC or ABS pipe.
- Cuts drywall, paneling, plywood or plaster board.
- Precision milled teeth for faster, cleaner cuts.
- Induction hardened teeth for longer life.
- Cuts in both directions.
- Quick change design allows for changing blades without tools.
- Replacement blades available.

Part Number	Description	Ctn Qty
TBS300	Tool Box Saw, 14" length, 15 teeth, 16 pt.	4/48
PVCSW12	PVC Saw, 12" aluminum handle	12
PVCSW18	PVC Saw, 18" aluminum handle	12
PVCSW12B	PVC Saw 12" BLADE ONLY	12
PVCSW18B	PVC Saw 18" BLADE ONLY	12



T22466

TASK HIGH TENSION HACKSAWS

Task Contractor's High Tension Hacksaw Features:

- Aluminum handle and end piece.
- Square tube frame prevents frame twisting.
- Multiple tension adjustment setting.
- 3 blade positions for 90°, 45° and use as a minisaw.
- Extra blade storage in frame.
- Unconditional warranty.



T22464

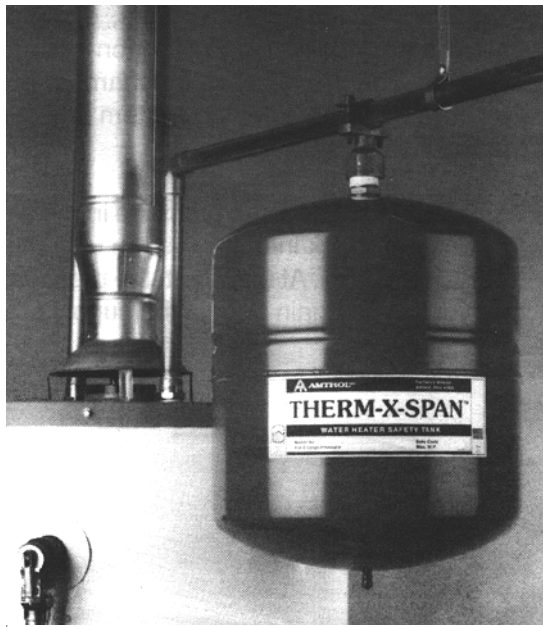
Task Professional Plus High Tension Hacksaw Features:

- Patented quick change blade feature.
- Soft touch, non-slip grip.
- Square tube frame design prevents frame twisting.
- Multiple tension adjustment settings.
- 3 blade positions for 90°, 45° and use as a mini hacksaw.
- Extra blade storage in frame.
- Unconditional warranty.
- Patented.

Part Number	Description	Ctn Qty
T22466	Contractors Hacksaw	6
T22464	Professional Plus Hacksaw	6



Tanks - Thermal Expansion



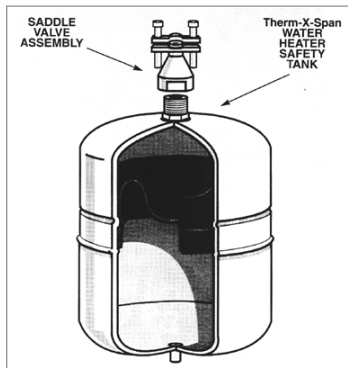
THERM-X-SPAN™

Hot Water Heater Safety Expansion Tank

THERM-X-SPAN™ tanks are diaphragm-type, pre-pressurized expansion tanks specifically designed for use with domestic hot water heaters. They act as a safety tank to accept the increased volume of water created when a water storage tank is heated, therefore keeping the system below the relief valve setting. These tanks are recommended in areas where a backflow preventer, check valve or pressure reducing valve is used, creating a closed system.

Features and Benefits:

- Eliminates relief valve spillage
- Controls pressure build-up
- Protects plumbing fixtures
- Smothers water hammer
- Extends water heater life
- Eliminates hot water waste



Specifications:

- Steel shell
- Polypropylene liner, butyl diaphragm
- Brass system connection on G5 and G12
- Stainless steel connection on ST25V, ST30V and ST42V
- 200° F maximum operating temperature
- 150 PSI maximum working pressure
- 40 PSI factory precharge



ANSI/NSF 61



IAPMO



Part Number	Configuration	Tank Volume	System Connection	Dimensions		
				Diameter	Height	Weight
G5	IN-LINE	2 gal	3/4" NPTM	8"	12 5/8"	5 lbs.
G12	IN-LINE	4.4 gal	3/4" NPTM	11"	15"	9 lbs.
ST25V	STAND	10.3 gal	1" NPTF	15 3/8"	19 1/4"	23 lbs.
ST30V	STAND	14.0 gal	1" NPTF	15 3/8"	23 7/8"	25 lbs.



City of Los Angeles
Approved



www.cbsupplies.ca
Phone: (866) 503-5523 Fax: (888) 562-2095
AGI@cbsupplies.ca



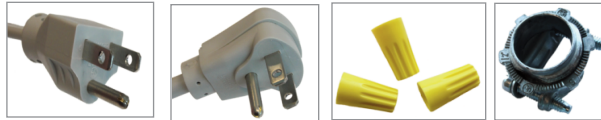


Plumbing Installation Kits & Cords

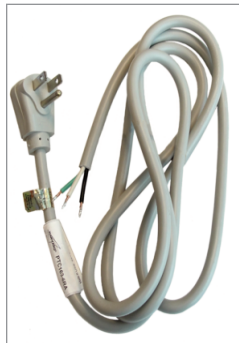


HARVARD Garbage Disposal Wiring Kit Features:

- Complete with 3 wire nuts and one SE/U oval cable connector.
- 6' long, 16 gauge, 3 conductor wire cord.
- Polybagged with header card.



Part Number	Description	Ctn Qty
HGDWK6ST	Kit w/ 6' cord straight plug	24
HGDWK6RA	Kit w/ 6' cord right angle plug	24



PTC163-6 Series

HARVARD Garbage Disposal Cord Features:

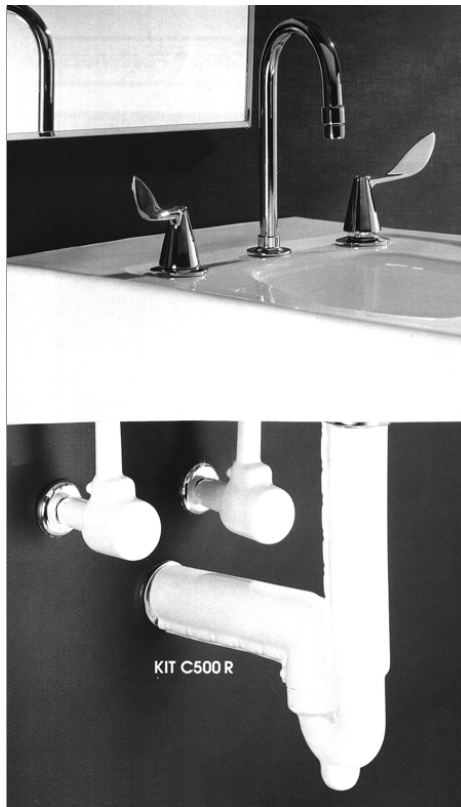
- Three prong straight or 90 degree (right angle) molded plugs.
- 16 gauge, 3 conductor.
- 13 amp, 125 Volt rating.
- Six foot length. Free end is split, stripped 3/8".
- UL and CSA listed in US and Canada.



Part Number	Description	Ctn Qty
PTC163-6ST	Straight plug cord	50
PTC163-6RA	Right angle plug cord	50



Trap Wrap



HC500R Series



Trap Wrap™ brand insulation kits offer an economical way to professionally insulate exposed undersink piping. Integrally molded fasteners press together to provide an easy, seamless, retrofit installation.

Trap Wrap™ Features:

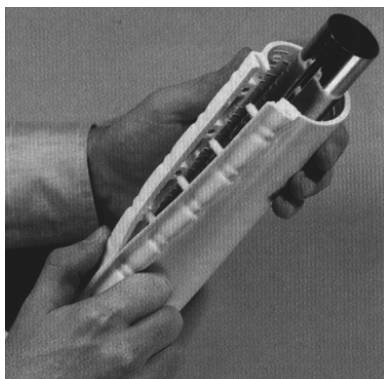
- Press-snap™ fasteners.
- Molded-in measurements.
- A.D.A. compliant.
- China White in color.
- Removable for service.
- Completely covers pipes and supplies.
- Sanitary surface.
- 2 piece P-trap assembly, 1 piece angle valve.
- Patented.

Satisfies the following requirements:

- A.D.A article 4.19.4
- A.N.S.I. A117.1
- California article P.1504B
- B.O.C.A. article P1203.4

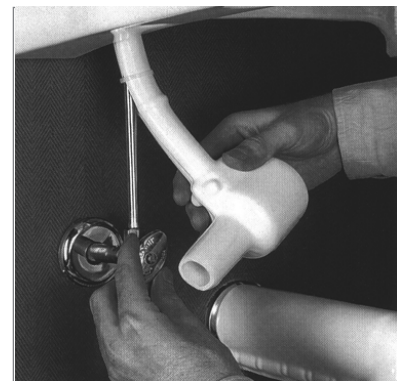
Part Number	Description	Ctn Qty
HC500R	Standard Trap Wrap	15
HC500RHS	Trap Wrap with extra sink bend	15

TrapWrap is a trademark of Brocar Products, Inc.



Angle valve cover allows for easy and quick emergency shut-off without removing cover

- Virtually seamless for enhanced appearance
- Reinstallable after service
- Highly tamper resistant
- Easily cleaned.



www.cb-supplies.ca
Phone: (866) 503-5523 Fax: (888) 562-2095
AGI@cb-supplies.ca

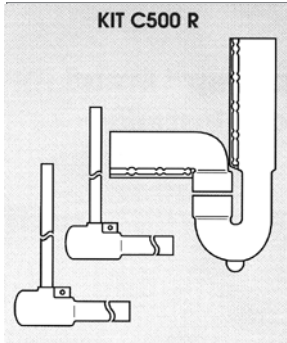




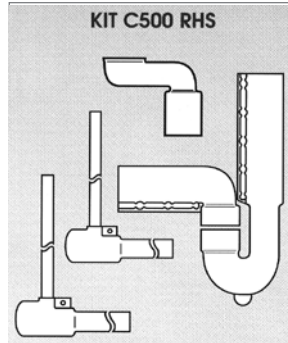
Trap Wrap



Formerly Brocar Products, Inc.



Includes 15" tail piece and trap cover, 8" waste arm insulation, fasteners, and hot and cold angle valve cover.



Includes all parts of HC500R plus C500HS off-set grid drain cover.

ASTM DATA

ASTM G21	Anti-Bacterial	No measurable bacterial growth
ASTM G22	Anti-Fungal	No measurable fungal growth
ASTM D635	Burning Characteristics	Less then 5 sec (ATB) 10 MM (AEB)
ASTM C177	Thermal conductivity	BTU - in/hr - ft2 - °F k value = 1.02

Sample Specification:

Wheelchair accessible lavatories and sinks shall be insulated with TrueBro Trap Wrap™ Insulation Kit (indicate model #, color and accessories). Trap assemblies shall have vinyl insulating outer shell with concealed integral fasteners for a virtually seamless finished installations. Angle stop covers shall permit unrestricted access to angle valves without removal of cover.

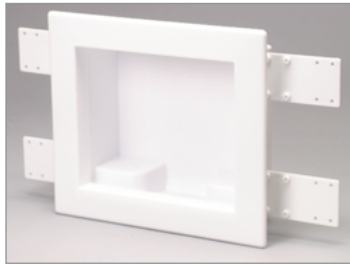


www.cb-supplies.ca
Phone: (866) 503-5523 Fax: (888) 562-2095
AGI@cb-supplies.ca





Washer Boxes & Drains



Washer Box

Washer Box Features:

- Center drain or dual drain.
- High impact polystyrene.
- 4 support brackets.
- Easy drain knockout.
- Top mount knockouts
- Box dimensions: 8 3/4" w x 7 1/2" h x 3 5/8" d
- Faceplate dimensions: 11 3/4" w x 10 1/8" h



Part Number	Valve Connection	Valve Type	Drain	Ctn Qty
Standard Washer Boxes				
38100	1/2" Sweat	1/4 turn brass ball valves	Center	12
38104	1/2" PEX	1/4 turn brass ball valves	Center	12
Dual Drain Washer Boxes				
38200	1/2" Sweat	2X4 Single Lever ball valves	Dual	12



General Purpose

General Purpose & Shower Drain Features:

- Universal 4 1/2" Snap-Tite Strainer.
- Mechanically attach or solvent weld over 2" DWV pipe.
- No-Calk drain is designed for use with preformed shower bases and is ideal for slab construction.
- Solvent Weld drain body is sealed to shower base with rubber gasket and fiber slip washer.



42097 Shower Drain



42099 Shower Drain

Shower Drain for Tile Base Features:

- Designed for use on built-up shower bases of tile, marble, where a shower pan liner is used.
- Reversible clamping collar is secured with stainless steel bolts into brass inserts to prevent slipping.
- Low profile design for use in tight spaces.
- Solvent welds over 2" or inside 3" Sch 40 DWV.
- Universal 4 1/4" Screw-Tite strainer.

Part Number	Material	Description	Size	Ctn Qty
General Purpose Drains				
43583	PVC	Drain w/ 5" stainless steel Screw-Tite strainer	3" or 4"	12
43601	PVC	Drain w/ 5" nickle alloy grate	3" or 4"	12
43599	PVC	Drain w/ 5" brass grate and metal ring	3" or 4"	12
Shower Drains				
42097	PVC	Solvent weld drain w/ stainless steel strainer	2"	12
42099	PVC	No caulk drain w/ stainless steel strainer	2"	12
Shower Drain for Tile Shower Bases				
42213	PVC	Drain w/ round stainless steel Screw-Tite strainer	2" or 3"	12





Closet Flanges & Gaskets



43503

Level Fit Closet Flange Features:

- 3" or 4" all plastic flange solvent welds inside of 4" or over 3" Sch 40 DWV pipe.
- Four mounting slots.
- Four countersunk holes for secure attachment to the floor.



43513

Level Fit Closet Flange with metal ring Features:

- The metal ring provides added strength and cracking resistance to the flange and can be rotated to allow precise alignment of bolts and screws.
- 3" or 4" flange solvent welds inside of 4" or over 3" Sch 40 DWV pipe.



43500

Level Fit Offset Closet Flange with metal ring Features:

- The metal ring provides added strength and cracking resistance to the flange and can be rotated to allow precise alignment of bolts and screws.
- 3" or 4" flange solvent welds inside of 4" or over 3" Sch 40 DWV pipe.
- 2" offset allows a margin of error for drain pipe/flange alignment.

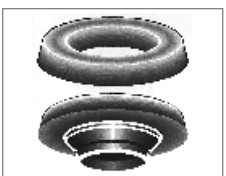
Part Number	Material	Description	Size	Ctn Qty
Closet Flanges				
43505	PVC	Plastic ring closet flange w/ KO	3" x 4"	12
43503	PVC	Plastic ring closet flange	3" x 4"	12
43502	ABS	Plastic ring closet flange	3" x 4"	12
Closet Flanges with Metal Adjustable Ring				
43513	PVC	Metal ring closet flange	3" x 4"	12
43512	ABS	Metal ring closet flange	3" x 4"	12
Offset Closet Flanges				
43501	PVC	Offset closet flange	3" x 4"	12
43500	ABS	Offset closet flange	3" x 4"	12



Adjustable Urinal Flange Kit Features:

- Horizontal mounting slots accommodate urinals with 3 1/2" to 7" mount centers.
- Kit includes all bolts, nuts, washers and gaskets.
- Flanges solvent weld into any 2" fitting. They do not weld "over".

Part Number	Material	Description	Size	Ctn Qty
43543	PVC	Urinal flange kit	2"	10



Wax Closet Gasket Features:

- Amber-color.
- Meets Federal specifications HH-C-536A.

Part Number	Description & Material	Size	Ctn Qty
AGWAX	Standard wax gasket	3", 4"	48
AGWAXH	Wax gasket w/Horn	3", 4"	24
AGWAXJ	Jumbo wax gasket 1 1/2"	3", 4"	24





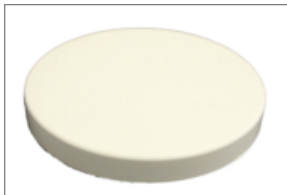
Test Plugs, Caps



Sure-Grip® Test Plug Features:

- Polypropylene construction.
- Fits all types of pipe at nominal sizes.
- Permanent or temporary use.

Part				
Number	Description	Size	Pipe ID	Ctn Qty
271158	Sure-Grip® plug	1- 11/2"	1.48" - 1.63"	50
271208	Sure-Grip® plug	2"	1.89" - 2.09"	50
271308	Sure-Grip® plug	3"	2.89" - 3.09"	30



Techno-Cap Features:

- Heavy duty, PVC, high pressure.
- Easily solvent cemented over end of CWV pipe.
- Will not clog or go down in pipe.

Part			
Number	Description	Size	Ctn Qty
33468	Tests 1 1/2" DWV Pipe	1-1/2"	100
33470	Tests 2" DWV Pipe	2"	100
33472	Tests 3" DWV Pipe	3"	50
33474	Tests 4" DWV Pipe	4"	25



Knock-Out™ Test Cap Features:

- Solvent cements to Sch 40 ABS and PVC DWV pipe.
- Deeper design provides stronger leak-free connections.
- "Tab" feature keeps hands free of solvent cement.
- Will withstand 10 PSI or 30' head pressure.

Part			
Number	Description	Size	Ctn Qty
39100	Knock-Out test cap	1-1/2"	50
39101	Knock-Out test cap	2"	50
39102	Knock-Out test cap	3"	50



Plumbing Specialty Accessories



Tub Box

Tub Box Features:

- Provides a quick, economical & clean way to install tub waste & drain.
- Made of a semi-flexible, very durable plastic polymer.
- Built in cut-out for up to 2" Sch 40 drain.

Part Number	Size	Ctn Qty
34080	13" x 13" x 6 1/2"	12



Shower Pan Liner 41597

Shower Pan Liner Features:

- Gray PVC shower pan liner is 40 mil – One roll per case.
- Liner marked in 6" increments for ease of measuring.
- Meets ASTM D-4551.

Part Number	Size	Ctn Qty
41597	5' x 40' 40 mil	1



Water Heater Pan

Plastic Water Heater Pan Features:

- Recommended for electric water heater protection.
- Pre-drilled to accept 1" or 1 1/2" fittings.
- Manufactured from semi-flexible, tough and durable 0.0625" plastic polymer.

Part Number	Size	Ctn Qty
34061	20"	12
34062	22"	12
34063	24"	12
34064	26"	12
34065	30"	12



Water Heater Stand

Gas Water Heater Stand Features:

- Allows the placement of the water heater tanks 18" above the ground as required by National Fuel Gas Code.
- Constructed of 18 gauge spangled galvanized sheet metal, holds up to 50 gallon water heaters.

Part Number	Size	Ctn Qty
34057	21" x 21" x 18" high	4

Roof Flashings

Approvals:



Report #93126



File #2326



Thermoplastic Self-Seal Roof Flashing Features:

- Non fading and non cracking rigid black thermoplastic base.
- Slides over pipe - for pitch to 40 degrees.
- 3" self-seal flashing can be used on 3" plastic, copper, steel or cast iron.
- Matte finish blends in better with roof surfaces.

Uni-Seal Flex Self-Seal Flexible Roof Flashing Features:

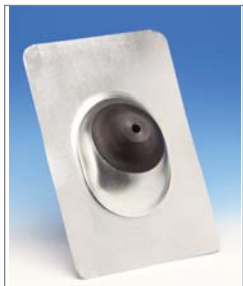
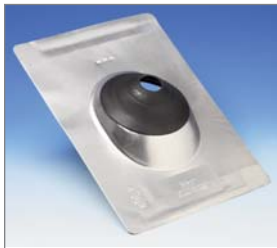
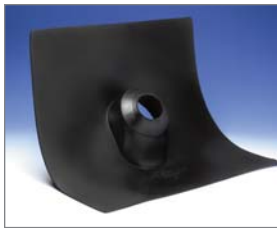
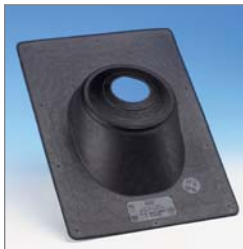
- Flexible base conforms to most flat or contoured roof surfaces including clay tile.
- No caulking needed.
- Slides over pipe - for pitch to 40 degrees.
- Unique dual bead configuration that seizes the vent pipe with a locking grip preventing leaking entirely.

Aluminum Self-Seal Roof Flashing Features:

- Rustproof 0.032 stamped aluminum standard base. Non fading sealing collar.
- Slides over pipe - for pitch to 40 degrees.

Galvanized Base Roof Flashing Features:

- Rustproof, stamped galvanized, 24 to 28 gauge. Non fading sealing collar.
- Slides over pipe - for pitch to 40 degrees.



New Part No	Old Part No.	Description	Size	Ctn Qty	List Price
Thermoplastic Self-Seal Roof Flashings					
11908	14101	Thermoplastic Flashing	1-1/4", 1-1/2"	12	\$ 12.63
11909	14102	Thermoplastic Flashing	2"	12	12.43
11910	14103	Thermoplastic Flashing	3"	12	12.24
11919	14185	Thermoplastic Flashing	1 1/2, 2, 3"	12	10.71
11911	14104	Thermoplastic Flashing	4"	12	13.21
Uni-Seal Flex Self-Seal Roof Flashings					
30104		Flexible Flashing	4"	12	12.77
Aluminum Self-Seal Roof Flashings					
12920	12101	Aluminum Flashing	1-1/4", 1-1/2"	12	25.50
12933	12102	Aluminum Flashing	2"	12	25.39
12946	12103	Aluminum Flashing	3"	12	27.34
Galvanized Self-Seal Roof Flashings					
11840	12201	Galvanized Flashing	1 1/4", 1 1/2"	20	20.66
11853	12202	Galvanized Flashing	2"	20	20.40
11866	12203	Galvanized Flashing	3"	20	23.50
11871	12209	Galvanized Flashing	1 1/4, 1 1/2, 2, 3"	20	19.85
11879	12204	Galvanized Flashing	4"	20	23.75



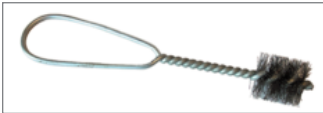
Solder Preparation Accessories

Economy Fitting Brush Features:

- Galvanized stem wire with stainless steel bristles.

Standard Fitting Brush Features:

- High carbon crimped steel bristles.
- Two-wire galvanized stem with plastic hanging hole.



FB-E Series



FB Series

Part Number	Description	Ctn Qty
FB50E	1/2" Economy Fitting Brush	12
FB75E	3/4" Economy Fitting Brush	12
FB100E	1" Economy Fitting Brush	12
FB125E	1-1/4" Economy Fitting Brush	8
FB150E	1-1/2" Economy Fitting Brush	6
FB200E	2" Economy Fitting Brush	6
FB50	1/2" Standard Fitting Brush	12
FB75	3/4" Standard Fitting Brush	12
FB100	1" Standard Fitting Brush	12
FB125	1-1/4" Standard Fitting Brush	8
FB150	1-1/2" Standard Fitting Brush	6
FB200	2" Standard Fitting Brush	6



AC310

Plumber's Abrasive Cloth Features:

- 120 grit.
- Water resistant abrasive cloth.
- Specially processed for cleaning copper tubing and fittings.
- As a utility cloth, plumbers find many uses on metal and wood.

Part Number	Description	Size	Ctn Qty
AC310	120 grit abrasive	11/2" x 10 yards	24 rolls
OM5	Open Mesh cloth	1 1/2" x 5 yards	24 rolls
OM10	Open Mesh cloth	1 1/2" x 10 yards	24 rolls



Perforated Hanger

101 Series Galvanized Duct Tape

- 24 and 28 gauge
- Alternate 1/4" and 5/16" bolt and nail holes
- 3/4" width



102 Series Plastic Polypropylene Hanger Strapping

- 1/8" dia. holes
- Max working load - 15# @ 85° F
- Breaking Strength - 100# @ 68° F



100G Series Galvanized or Zinc Plated Perforated hanger strapping

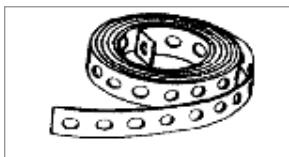
- 20 to 28 gauge
- 1/4" bolt holes
- 3/4" width



101 Series



102 Series



100G and 100S Series

Part Number	Size	Ctn Qty
101 Series - Galvanized Duct Tape		
101-10	3/4" x 10' x 24 gauge	50
101-50	3/4" x 50' x 24 gauge	10
101-100	3/4" x 100' x 24 gauge	5
101-10-28	3/4" x 10' x 28 gauge	50
101-50-28	3/4" x 50' x 28 gauge	10
101-100-28	3/4" x 100' x 28 gauge	5
102 Series - Plastic Polypropylene		
102-10	3/4" x 10' x .05 gauge	BULK/100
102-25	3/4" x 25' x .05 gauge	1/40
102-50	3/4" x 50' x .05 gauge	1/20
102-100	3/4" x 100' x .05 gauge	1/10
100G Series - Galvanized or Zinc Plated		
100G-10-24	3/4" x 10' x 24 gauge	50
100G-50-24	3/4" x 50' x 24 gauge	10
100G-100-24	3/4" x 100' x 24 gauge	5
100G-10-28	3/4" x 10' x 28 gauge	50
100G-10-22	3/4" x 10' x 22 gauge	50
100G-50-22	3/4" x 50' x 22 gauge	10
100G-100-22	3/4" x 100' x 22 gauge	5
100G-10-20	3/4" x 10' x 20 gauge	50
100G-50-20	3/4" x 50' x 20 gauge	10
100G-100-20	3/4" x 100' x 20 gauge	5
100S Series - Steel Plain		
100S-10-24	3/4" x 10' x 24 gauge	50



Clip & Van Hangers

604 Series Insulated Glide Clip Features:

- Specially compounded material wrapped around copper clad steel permits smooth, silent pipe movement.
- Prevents electrolysis and corrosion.
- Resists temperature up to 280° F(137° C). Ideal for hot water heating or supply lines -- eliminates creaking noises made by pipe expanding and contracting against wood surfaces.



606 Series Van Hanger Features:

- Unique design for applications that require space between pipe and mounting surface.
- Copper clad steel, heavy duty metal construction.



604 Series



606 Series



608 Series

608 Series Copper Tube Strap Features:

- Copper clad steel; heavy duty metal construction.

Part Number	Size	Mounting Hardware (incl)	Ctn Qty
Insulated Glide Clips			
604-1/2	1/2"	Copper Clad Nails	10
604-3/4	3/4"	Copper Clad Nails	10
604-1	1"	Copper Clad Nails	10
604-11/4	1-1/4"	Copper Clad Nails	10
Copper Clad Van Hangers			
606-1/2	1/2"	Copper Clad Screw	20
606-3/4	3/4"	Copper Clad Screw	20
606-1	1"	Copper Clad Screw	20
Copper Tube Straps			
608-1/2	1/2"	Copper Clad Nails	100
608-3/4	3/4"	Copper Clad Nails	50
608-1	1"	Copper Clad Nails	50
608-11/4	1-1/4"	Copper Clad Nails	50



Pipe Straps & Clamps



500 Series Copper Clad Tube Straps

- 2 ear and one ear styles

510 Series Copper Clad Tube Straps

- One ear styles

511 Series Plastic Tube Tallon

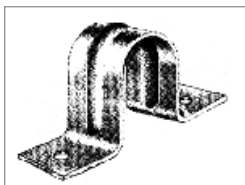
- Made of polyethylene
- 1/2, 3/4 and 1" sizes available

513 Series Single Shot Hanger

- Plastic with nail

515 Series Suspension Clamp

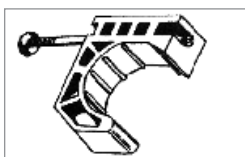
- Made of polyethylene



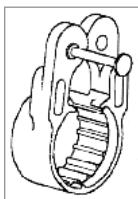
500 Series



510 Series



511 Series



513 Series



515 Series

Part Number	Size	Ctn Qty
Copper Clad Tube Straps, TWO HOLE		
500-1/2	1/2"	100
500-3/4	3/4"	100
500-1	1"	100
500-1 1/4	1 1/4"	100
Copper Clad Tube Straps, ONE HOLE		
510-1/4	1/4"	100
510-3/8	3/8"	100
510-1/2	1/2"	100
510-3/4	3/4"	100
510-1	1"	100
510-1 1/2	1 1/2"	50
510-2	2"	50
Tube Tallon Clamp		
511-1/2	1/2"	100
511-3/4	3/4"	100
511-1	1"	50
Suspension Clamp		
513-1/2	1/2"	50
513-3/4	3/4"	50
Suspension Clamp		
515-1/2	1/2"	100
515-3/4	3/4"	100
515-1	1"	50



600 Series Galvanized Pipe Straps

- 2 ear
- 1/2 - 2" sizes available

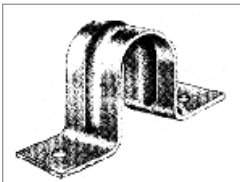


603 Series Plastic Coated Pipe Straps

- 2 ear
- 1" - 2" sizes available

610 and 620 Series Galvanized Pipe Straps

- 1 ear
- 1" - 2" sizes available



600 Series



603 Series

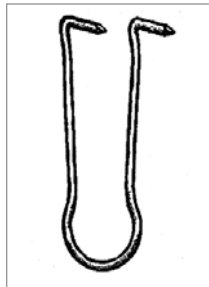


610/620 Series

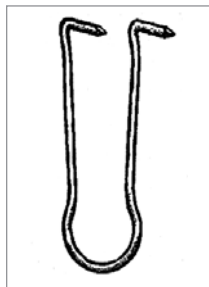
Part Number	Size	Ctn Qty
Galvanized Pipe Straps		
600-1/4	1/4"	100
600-3/8	3/8"	100
600-1/2	1/2"	100
600-3/4	3/4"	100
600-1	1"	100
600-1 1/4	1 1/4"	50
600-1 1/2	1 1/2"	50
600-2	2"	50
600-2 1/2	2 1/2"	25
600-3	3"	25
600-4	4"	25
Plastic Coated Pipe Straps		
603-1	1"	50
603-1 1/4	1 1/4"	50
603-1 1/2	1 1/2"	50
603-2	2"	50
603-3	3"	25
603-4	4"	25
603-6	6"	10
One Hole Pipe Straps		
610-1/4	1/4" Pipe	100
610-3/8	3/8" Pipe	100
610-1/2	1/2" Pipe	100
610-3/4	3/4" Pipe	100
610-1	1" Pipe	100
610-1 1/4	1 1/4" Pipe	100
610-1 1/2	1 1/2" Pipe	50
610-2	2" Pipe	50
One Hole EMT Straps		
620-1/2	1/2" EMT	100
620-3/4	3/4" EMT	100
620-1	1" EMT	100
620-1 1/4	1 1/4" EMT	100
620-1 1/2	1 1/2" EMT	50
620-2	2" EMT	50

Tube & Pipe Hooks

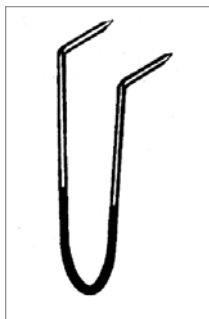
200 S Series Bright Steel
 200 C Series Copper Clad
 200 P Series Plastic Coated



200S Series



200C Series



200P Series

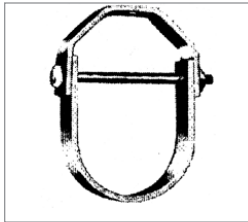
Part Number	Size (pipe x length)	Ctn Qty	List Price
Bright Steel			
200S-1/2X4	1/2" X 4"	50	\$ 0.53
200S-1/2X6	1/2" X 6"	50	0.61
200S-1/2X8	1/2" X 8"	50	0.67
200S-3/4X4	3/4" X 4"	50	0.53
200S-3/4X6	3/4" X 6"	50	0.61
200S-1X4	1" X 4"	50	0.53
200S-1X6	1" X 6"	50	0.61
200S-1X8	1" X 8"	50	0.71
200S-1 1/4X6	1 1/4" X 6"	50	0.97
200S-1 1/4X8	1 1/4" X 8"	50	1.09
200S-1 1/2X6	1 1/2" X 6"	50	0.97
200S-1 1/2X8	1 1/2" X 8"	50	1.09
200S-2X6	2" X 6"	50	0.97
200S-2X8	2" X 8"	50	1.10
Copper Clad			
200C-1/2X4	1/2" X 4"	50	0.60
200C-1/2X6	1/2" X 6"	50	0.68
200C-1/2X8	1/2" X 8"	50	0.81
200C-3/4X4	3/4" X 4"	50	0.63
200C-3/4X6	3/4" X 6"	50	0.68
200C-3/4X8	3/4" X 8"	50	0.86
200C-1X4	1" X 4"	50	0.63
200C-1X6	1" X 6"	50	0.69
200C-1X8	1" X 8"	50	0.86
200C-1 1/4X6	1 1/4" X 6"	50	0.68
200C-1 1/4X8	1 1/4" X 8"	50	0.81
200C-1 1/2X6	1 1/2" X 6"	50	1.13
200C-1 1/2X8	1 1/2" X 8"	50	1.17
200C-2X6	2" X 6"	50	1.13
200C-2X8	2" X 8"	50	1.17
Plastic Coated			
200P-1/2X4	1/2" X 4"	50	1.86
200P-1/2X6	1/2" X 6"	50	1.97
200P-3/4X4	1/2" Pipe* x 4"	50	1.86
200P-3/4X6	1/2" Pipe* x 6"	50	1.97
200P-3/4X8	1/2" Pipe* x 8"	50	2.86
200P-1x4	3/4" Pipe* x 4"	50	1.86
200P-1X6	3/4" Pipe* x 6"	50	1.97
200P-1X8	3/4" Pipe* x 8"	50	2.86
200P-1 1/4X6	1" Pipe * x 6"	50	3.65

* For plastic coated steel pipe hooks, order tube hook of next larger size.
 Ex: For 3/4" x 6" pipe use 1" x 6" hook.

Pipe Hangers

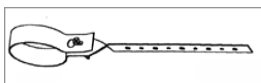
DWV Hanger - Galvanized

- Not plastic coated



Clevis

Part Number	Size	Ctn Qty	List Price
Light Clevis			
104-1/2	1/2"	100	\$ 1.73
104-3/4	3/4"	100	1.77
104-1	1"	100	1.82
104-1 1/4	1 1/4"	100	1.94
104-1 1/2	1 1/2"	100	2.10
104-2	2"	50	2.24
104-2 1/2	2 1/2"	25	3.91
104-3	3"	25	4.32
104-4	4"	25	5.85
Copperclad Clevis			
406-1/2	1/2"	100	1.99
406-3/4	3/4"	100	2.04
406-1	1"	100	2.38
406-1 1/4	1 1/4"	100	2.54
406-1 1/2	1 1/2"	100	2.81
406-2	2"	50	3.37
Standard Clevis, Black			
204-1/2	1/2"	100	1.97
204-3/4	3/4"	100	1.97
204-1	1"	100	2.08
204-1 1/4	1 1/4"	100	2.38
204-1 1/2	1 1/2"	100	2.57
204-2	2"	50	2.82
204-2 1/2	2 1/2"	25	5.52
204-3	3"	25	5.96
204-4	4"	25	7.37
204-5	5"	15	14.10
204-6	6"	10	15.58
204-8	8"	8	24.38
204-10	10"	BULK	65.57
204-12	12"	BULK	65.39
DWV Hanger - Galvanized			
120-1 1/2	1 1/2"	50	2.47
120-2	2"	50	2.59
120-3	3"	50	2.70
120-4	4"	50	3.10



DWV Hanger



Pipe Hangers

Adjustable Swivel Ring

- Galvanized, or copperclad
- 1/2" to 4" - 3/8" rod
- 5" to 8" - 1/2" rod



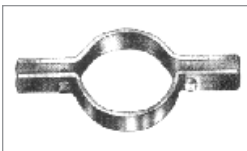
900 All Thread Rod

- 6' length, plain

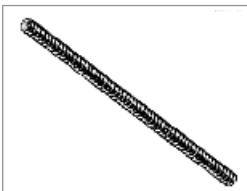


300 Swivel Ring

Part Number	Size	Ctn Qty
120-4	4"	50
Adjustable Swivel Ring, Galvanized		
300-1/2	1/2"	100
300-3/4	3/4"	100
300-1	1"	100
300-1 1/4	1 1/4"	100
300-1 1/2	1 1/2"	100
300-2	2"	100
300-2 1/2	2 1/2"	50
300-3	3"	50
300-4	4"	25
300-5	5"	20
300-6	6"	20
300-8	8"	10
Adjustable Swivel Ring, Copperclad		
301-1/2	1/2"	100
301-3/4	3/4"	100
301-1	1"	100
301-1 1/4	1 1/4"	100
301-1 1/2	1 1/2"	100
301-2	2"	100
Riser Clamp, Black		
108-1	1"	25
108-1 1/4	1 1/4"	25
108-1 1/2	1 1/2"	25
108-2	2"	25
108-2 1/2	2 1/2"	25
108-3	3"	25
108-4	4"	25
108-5	5"	15
108-6	6"	10
108-8	8"	BULK
108-10	10"	BULK
All Thread Rod		
900-1/4	1/4"	50
900-3/8	3/8"	25
900-1/2	1/2"	15
900-5/8	5/8"	9
900-3/4	3/4"	6



108 Riser Clamp



900 Rod



www.cb-supplies.ca

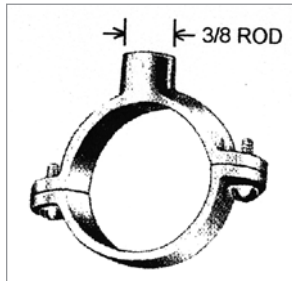
Phone: (866) 503-5523 Fax: (888) 562-2095
AGI@cb-supplies.ca



Split Ring Pipe Hangers

Split Ring Hangers - Malleable Iron

- Galvanized, black or copper clad
- 3/8" to 2" - 3/8" rod
- 2 1/2" to 4" - 1/2" rod



Split Ring Hangers

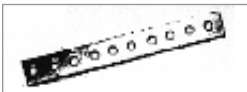
Part Number	Size	Rod Size	Ctn Qty	List Price
Split Ring Pipe Hanger, Black malleable				
202-3/8	3/8"	3/8"	50	\$ 3.08
202-1/2	1/2"	3/8"	50	3.08
202-3/4	3/4"	3/8"	50	3.20
202-1	1"	3/8"	50	3.56
202-1 1/4	1 1/4"	3/8"	25	4.40
202-1 1/2	1 1/2"	3/8"	25	5.45
202-2	2"	3/8"	25	5.70
Split Ring Pipe Hanger, Galvanized malleable				
385-3/8	3/8"	3/8"	50	3.44
385-1/2	1/2"	3/8"	50	3.44
385-3/4	3/4"	3/8"	50	3.67
385-1	1"	3/8"	50	4.21
385-1 1/4	1 1/4"	3/8"	25	5.04
385-1 1/2	1 1/2"	3/8"	25	7.06
385-2	2"	3/8"	25	6.52
385-2 1/2	2 1/2"	1/2"	25	14.82
385-3	3"	1/2"	25	17.79
385-4	4"	1/2"	25	23.72
Split Ring Pipe Hanger, Copper Clad, Malleable				
485-3/8	3/8"	3/8"	50	2.73
485-1/2	1/2"	3/8"	50	2.73
485-3/4	3/4"	3/8"	50	2.78
485-1	1"	3/8"	50	3.14
485-1 1/4	1 1/4"	3/8"	25	3.73
485-1 1/2	1 1/2"	3/8"	25	3.86
485-2	2"	3/8"	25	4.56
485-2 1/2	2 1/2"	1/2"	25	14.82
485-3	3"	1/2"	25	17.79
485-4	4"	1/2"	25	23.72



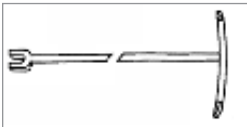
Plastic Pipe Hangers & Accessories



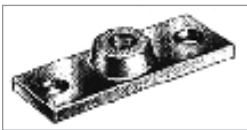
DWV Hanger



DWV Extension Bar



Stop Keys



Flanges



C Clamps



Top Beam Clamp

Part Number	Size	Ctn Qty
DWV Hanger Plastic Coated		
220-11/2	1 1/2"	50
220-2	2"	50
220-3	3"	50
220-4	4"	50
220-6	6"	25
DWV Extension Bar		
221-3	16 gauge x 3'	25
Stop Keys		
413-6	6'	6
413-8	8'	6
413-10	10'	6
Ceiling Flanges		
208-3/8BT	3/8" bolt thread, malleable iron	100
389-3/8BT	3/8" bolt thread, galvanized	100
389-1/2BT	1/2" bolt thread, galvanized	100
489-3/8BT	3/8" bolt thread, copper clad	100
C Clamps		
122-1/4	For Pipe Sizes	Fits Rods Size
122-3/8	1/2" - 2"	1/4" without locknut
122-1/2	2 1/2" - 3 1/2"	3/8" without locknut
123-3/8	1/2" - 2"	1/2" without locknut
123-1/2	1/2" - 2"	3/8" with locknut
123-1/2	2 1/2" - 3 1/2"	1/2" with locknut
123-5/8	4" - 5"	5/8" with locknut
123-3/4	6"	3/4" with locknut
Top Beam Clamp , 3/4" Standard Opening		
125-3/8	3/8" rod	100
125-1/2	1/2" rod	100



Strap & Tube Hangers



603 Series Natick Strap Hanger Features:

- Made from copper clad steel, will not rust or rot.
- A tapered end, copper clad machine screw with fiber washer is mounted on every hanger for quick, tumble free installations.
- Can be mounted cross beam or along the beam.
- Copper clad mounting nails are included.



603 Series

Part Number	For Pipe Size	Hanger Length	Mounting Hardware Included	Ctn Qty
Natick Strap Hangers				
603-1/2x6	1/2"	6"	Copper Clad Nails	25
603-1/2x12	1/2"	12"	Copper Clad Nails	25
603-3/4x6	3/4"	6"	Copper Clad Nails	25
603-3/4x12	3/4"	12"	Copper Clad Nails	25
603-1x6	1"	6"	Copper Clad Nails	25
603-1x12	1"	12"	Copper Clad Nails	25
603-1 1/4x6	1-1/4"	6"	Copper Clad Nails	25
603-1 1/4x12	1-1/4"	12"	Copper Clad Nails	25



918, 919, 916 and 913 FHA Plates

- 1 1/2" width and 3" width in 18 gauge
- 18, 16 and 13 gauge

530 Stud Guards

- Triangle points
- 1 1/2" width
- 18 gauge

531 Stud Guards

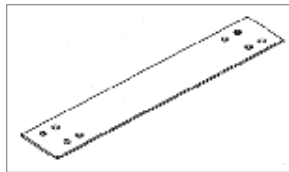
- Triangle points
- 1 1/2" width
- 20 gauge

920 Stud Guards

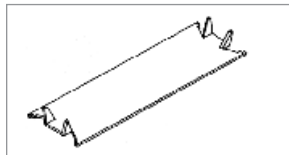
- Twist points
- 1 1/2" width
- 19 gauge

922 Stud Guards

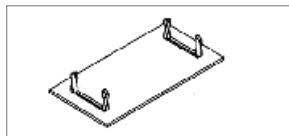
- Interlocking
- 1 1/2" width
- 20 gauge



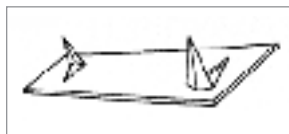
918/916/913 FHA Plates



530 & 531 Stud Guards



920 Stud Guards



922 Stud Guards

Part Number	Size and Gauge	Ctn Qty
FHA Plates		
918-11/2X9	1 1/2" X 9", 18 gauge	50
918-11/2X12	1 1/2" X 12", 18 gauge	50
918-11/2X18	1 1/2" X 18", 18 gauge	50
916-11/2X9	1 1/2" X 9", 16 gauge	50
916-11/2X12	1 1/2" X 12", 16 gauge	50
916-11/2X18	1 1/2" X 18", 16 gauge	50
913-11/2X9	1 1/2" X 9", 13 gauge	50
913-11/2X12	1 1/2" X 12", 13 gauge	25
913-11/2X18	1 1/2" X 18", 13 gauge	25
919-3X9	3" X 9", 18 gauge	50
919-3X12	3" X 12", 18 gauge	50
919-3X18	3" X 18", 18 gauge	50
Stud Guards		
530-11/2X3	1 1/2" X 3", 18 gauge	100
530-11/2x5	1 1/2" x 5", 18 gauge	100
530-11/2X6	1 1/2" X 6", 18 gauge	100
531-11/2X3	1 1/2" X 3", 20 gauge	100
531-11/2x5	1 1/2" x 5", 20 gauge	100
531-11/2X6	1 1/2" X 6", 20 gauge	100
920-11/2X3	1 1/2" x 3", 19 gauge	100
920-11/2X6	1 1/2" X 6", 19 gauge	100
922-11/2X3	1 1/2" x 3", 20 gauge	100
922-11/2X6	1 1/2" X 6", 20 gauge	100



Geothermal Installation Accessories



GLLS8

GELOOP Leak Seal:

- Preventative maintenance for residential and commercial geothermal systems.
- A blended concentrated material designed to coat all surfaces it comes into contact with and reduce the formation of rust and corrosion.
- Field tested and proven effective in sealing system leaks (holes up to 1/8" in diameter.)
- Do not use if strainer is installed in system.
- Can plug or seal off strainers and gauges. Use with care.

Part Number	Description	Ctn Qty
GLLS8	GEOLOOP Leak Seal 8 oz. bottle	20

GELOOP Leak Seal Directions:

- Shake well before using.
- Use one 8 oz. bottle per 5 ton (up to 1200 gallons) system for minor leaks. A second bottle can be added for larger leaks.
- Premix with no less than 8-16 oz. of water.
- With circulating pump(s) running in continuous mode or using flushcart, pour or insert mixture into loop and circulate for several hours at low pressure. After introduced to the system, build pressure to 60 psi or higher (not to exceed 160 psi). Circulate for 24 hours. Return system to normal operating pressure thereafter. Check system in one week for pressure drop. Treatment can be repeated if needed.



RBGSE Series

Cast Bronze Ground Source Elbow Features:

- Elbow with 1/4" tapping used to check pressures and temperatures at the geothermal unit.

Part Number	Size	Ctn/Case Qty
Cast Bronze Ground Source Elbows (INS x MIP w/ 1/4" tap)		
RBGSE3/4	3/4" x 3/4"	10/100
RBGSE1X3/4	1" x 3/4"	10/100
RBGSE1	1" x 1"	10/80
RBGSE11/4	1 1/4" x 1 1/4"	5/50





Pump Tanks - Sourceline



INLINE MODELS

- Appliance Gray finish
- Maximum working temperature: 200 ° F.
- Maximum working pressure: 100 PSIG
- Third party certified to NSF/ANSI 372.



ANSI/NSF 61



Part Number	Dimensions (ins)		Total Volume (gal)	Max Accept Factor	Drawdown (gal)			Shipping Wt (Vol) lbs (cu ft)	Pallet Qty	System Conn. NPTM	Precharge Pressure (psig)
	Dia	Height			20/40	30/50	40/60				
SL2I	8	12 5/8	2.0	0.45	0.8	0.7	0.6	5 (0.6)	75	3/4"	18
SL4I	11	15	4.4	0.55	1.8	1.5	1.3	9 (1.2)	48	3/4"	18
SL8I	11	22 1/4	7.4	0.43	3.1	2.6	2.2	15 (2.0)	32	3/4"	28
SL10I	15 3/8	17 3/4	10.3	1.00	4.1	3.5	3.0	20 (3.0)	18	1"*	38
SL14I	15 3/8	22	14.0	0.81	5.6	4.8	4.1	22 (4.1)	18	1"*	38

* NPTF connection.



VERTICAL STAND MODELS

- Appliance Gray finish
- Malleable elbow system connection.
- Maximum working temperature: 200 ° F.
- Maximum working pressure: 100 psig
- Third party certified to NSF/ANSI 372.



ANSI/NSF 61



Part Number	Dimensions (ins)		Total Volume (gal)	Max Accept Factor	Drawdown (gal)			Shipping Wt (Vol) lbs (cu ft)	Pallet Qty	System Conn. NPTF	Precharge Pressure (PSIG)
	Dia	Height			20/40	30/50	40/60				
SL14V	15 3/8	25 1/8	14.0	0.81	5.6	4.8	4.1	25 (3.8)	18	1"	38
SL20V	15 3/8	32 1/8	20.0	0.57	8.0	6.8	5.9	33 (4.9)	18	1"	38
SL32V	15 3/8	46 1/2	32.0	0.35	-	10.9	9.4	43 (7.0)	9	1"	38
SL34V	22	29 5/8	34.0	1.00	13.7	11.6	10.0	61 (9.5)	4	1 1/4"	38
SL44V	22	36	44.0	0.77	17.7	15.0	12.9	69 (11.0)	4	1 1/4"	38
SL62V	22	46 3/4	62.0	0.55	24.9	21.1	18.2	92 (13.9)	4	1 1/4"	38
SL86VT	22	62 1/4	86.0	0.39	-	29.2	25.3	114 (18.1)	4	1 1/4"	38
SL86VS	26	47 1/4	86.0	0.54	34.6	29.2	25.3	123 (18.9)	4	1 1/4"	38
SL119V	26	61 7/8	119.0	0.39	-	40.5	35.0	166 (24.5)	4	1 1/4"	38



HORIZONTAL PUMP STAND MODELS

- Appliance Gray finish
- Maximum working temperature: 200 ° F.
- Maximum working pressure: 100 PSIG
- Third party certified to NSF/ANSI 372.



ANSI/NSF 61



Part Number	Dimensions (ins)			Total Volume (gal)	Max Accept Factor	Drawdown (gal)			Shipping Wt (Vol) lbs (cu ft)	Pallet Qty	System Conn. NPTM	Precharge Pressure (psig)
	H	W	L			20/40	30/50	40/60				
SL5H	11	10 9/16	18 1/4	5.3	0.80	2.1	1.8	1.6	13 (1.5)	72	3/4"	20
SL14H	16	15 3/8	20 7/8	14.0	0.81	5.6	4.8	4.1	29 (4.0)	18	1"	38



www.cbsupplies.ca
 Phone: (866) 503-5523 Fax: (888) 562-2095
 AGI@cbsupplies.ca



Pump Tanks - Sourceline™



SOURCELINE™ Characteristics

- Projection welded airtight valve
- Durable steel tank with appliance-like finish
- Pre-pressurized, sealed-in air chamber
- Butyl/EPDM diaphragm isolates water from air
- Separate polypropylene liner
- 100% non-metallic reservoir
- Water-tight, welded system connection
- 100 PSIG maximum working pressure
- NSF Standard 61 listed

Pre-Pressurized Water System Tanks Cross Reference

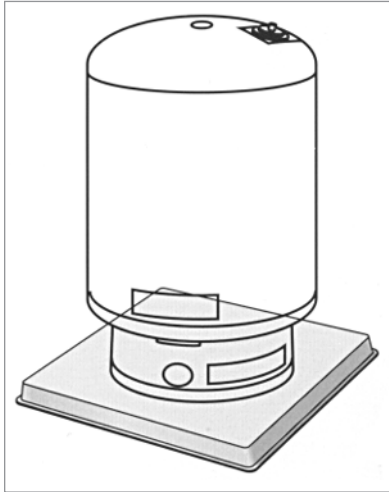
() represents total volume (gals.)

SOURCELINE™ Facts

- Seamless liner
- Diaphragm never creases like bladder tank designs
- No bubbles or corners to trap sediment
- Does not promote bacteria growth
- 5 year limited warranty

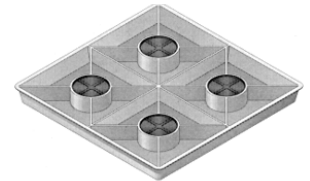
AGI Sourcline	Flexcon Challenger	Flexcon Well-Rite	AO Smith Goulds	Sta-Rite Pro-Source	State PermaAir	Elbi Top Pro	Wessels	Str. Fibers Well Mate	Amtrol Well-X-Trol	Amtrol Wel-Flo	Amtrol Champion	Amtrol ProLine
SL2I(2)	JR6(2.1)	JR6(2.1)	V6P(2)		PIL-2(2)	D-8(2.1)	FX8(2.1)		WX101(2)			
SL4I(4.4)	JR15(4.5)	JR15(4.5)	V15P(4.5)		PIL-5(4.6)	D-18(5)	FX19(5)	WM-2(3.6)	WX102(4.4)			
SL5H(5.3)	JR44HS(5.2)	JR44HS(5.2)		PS15H-S05(6)			FX20H(5.3)		WX105PS(5.3)			
	JR20(6.0)	JR20(6.0)		PS15-S02(6)		D-25(6.5)						
SL8I(7.4)	JR25(8.5)	JR25(8.5)	V25P(8.2)		PIL-7(7.3)				WX103(7.4)			
SL10I(10.3)						D-35(9)			WX104(10.3)			
SL14I(14)					PIL-14(14)				WX200(14)			
SL14V(14)	PC44(14)	WR45(14)	V45P(13.9)	PS30-T01(14)	PAD-14(14)	DV-50(13.5)	FX60V(16)	WM-4(14.5)	WX201(14)	WF45(14)	CH3001(14)	CA3001(14)
SL20V(20)	PC66(20)	WR60(20)	V60(19.9)	PS42T-T02(19)	PAD-20(20)	DV-80(21)	FX80V(21)	WM-6(19.8)	WX202(20)	WF60(20)	CH4202(20)	CA4202(20)
	PC88(26)	WR80(26)				DV-100(27)	FX100V(26)					
SL32V(32)	PC111(32)	WR100(32)	V100(31.8)	PS75T-T03(32)				WM-9(29.5)	WX203(32)	WF100(32)	CH8003(32)	CA8003(32)
SL34V(34)	PC122(33.4)	WR120(33.4)		PS82T-T05(35)	PAD-36S(36)				WX205(34)	WF110(34)	CH8205(34)	CA8205(34)
SL44V(44)	PC144(44)	WR140(44)	V140(45.2)			DV-150(40)		WM-12(40.3)	WX250(44)	WF140(44)	CH10050(44)	CA10050(44)
				PS120-T50(50)	PAD-52(52)		FX200V(52)					
SL62V(62)	PC211(62)	WR200(62)	V200(65.1)	PS200-T51(62)		DV-200(53)		WM-20WB(60)	WX251(62)	WF200(62)	CH12051(62)	CA12051(62)
SL86VT(86)	PC244(81)	WR240(81)	V260(84.9)		PAD-86(86)				WX252(86)	WF252(86)	CH252(86)	CA17252(86)
SL86VS(86)	PC266(85)	WR260(85)	V250(83.5)	PS220-T52(85)		DV-300(80)	FX300V(80)	WM-25WB(86.7)	WX302(86)	WF260(86)	CH17002(86)	CA17002(86)
					PAD-96(96)							
SL119V(119)	PC366(119)	WR360(119)	V350(115.9)		PAD-119(119.5)	DV-450(119)		WM-35WB(119.7)	WX350(119)	WF360(119)	CH22050(119)	CA22050(119)
						DV-500(132)	FX500V(132)					

Equipment Pads

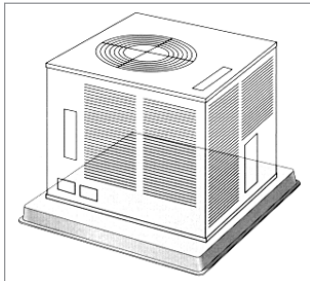
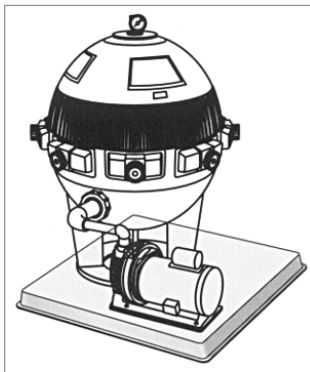


HEF-T-PAD™ Features:

- Injection molded from high impact polyolefin for strength and durability.
- Resistant to impact, UV degradation and weathering.
- Will not crack, flake or warp.
- Virtually impervious to climate changes.
- Drillable, permits installation of refrigerant and electrical lines under and through pad. Also permits equipment to be easily secured to pad.
- Unique, non-creep surface absorbs vibration and noise and keeps equipment in it's original position.
- Gray



Underside of Hef-T-Pad showing support ribs, stabilization pads and stabilization flange.



Part Number	Size	Pallet Qty	List Price
2" HEF-T-PADS			
X2424211	24" x 24" x 2" one piece	24	\$ 70.50
X2436211	24" x 36" x 2" one piece	24	112.43
X3232211	32" x 32" x 2" one piece	24	111.10
X3244211	32" x 44" x 2" one piece	24	145.26
X3636211	36" x 36" x 2" one piece	24	141.54
X3836211	38" x 36" x 2" one piece	24	127.81
X3842211	38" x 42" x 2" one piece	24	164.78
3" HEF-T-PADS			
X2424311	24" x 24" x 3" one piece	16	90.39
X2436311	24" x 36" x 3" one piece	16	142.76
X3030311	30" x 30" x 3" one piece	16	109.47
X3232311	32" x 32" x 3" one piece	16	120.20
X3636311	36" x 36" x 3" one piece	16	174.33